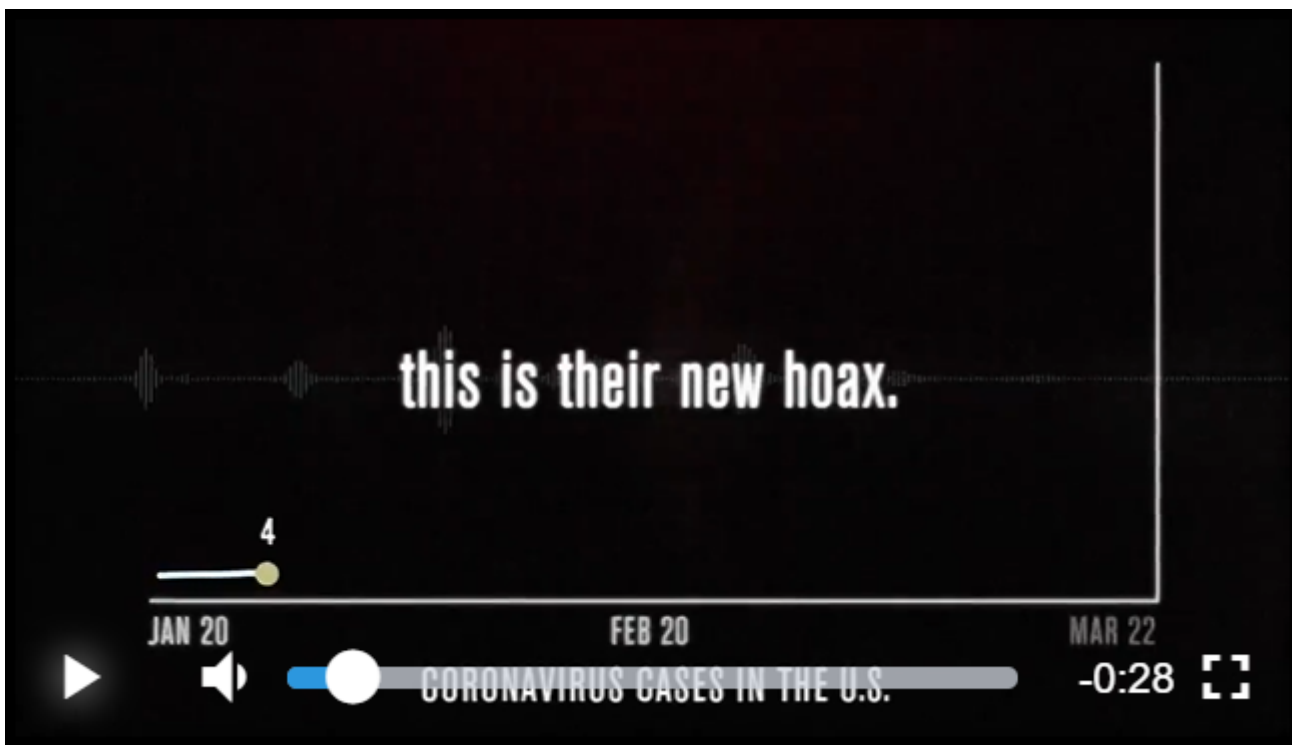


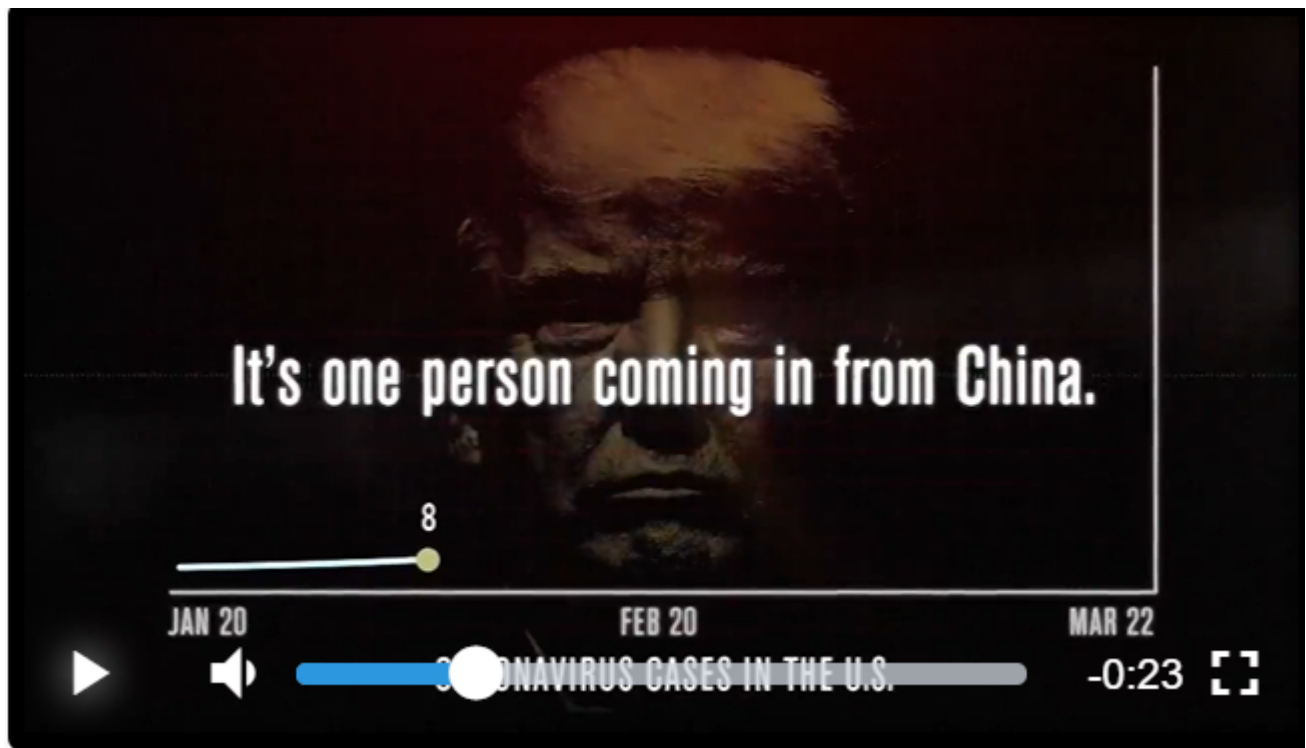
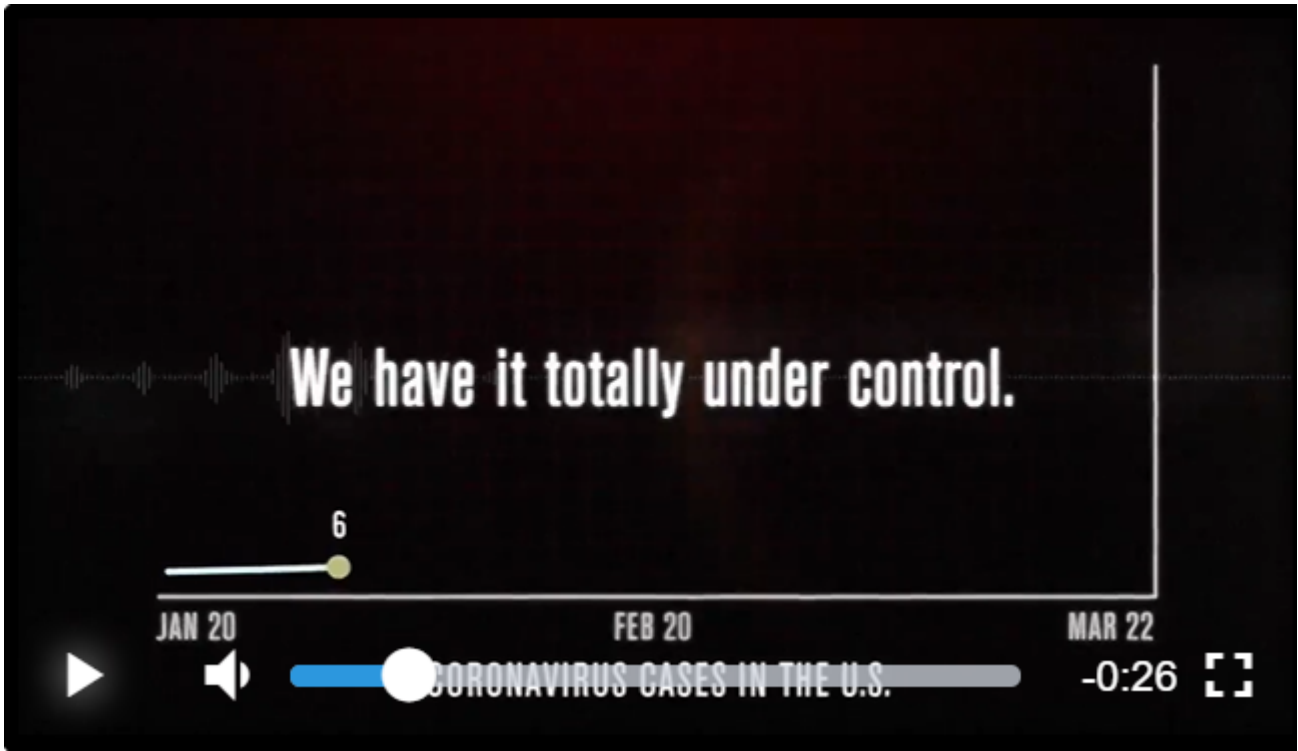
Trump HOAX Ad

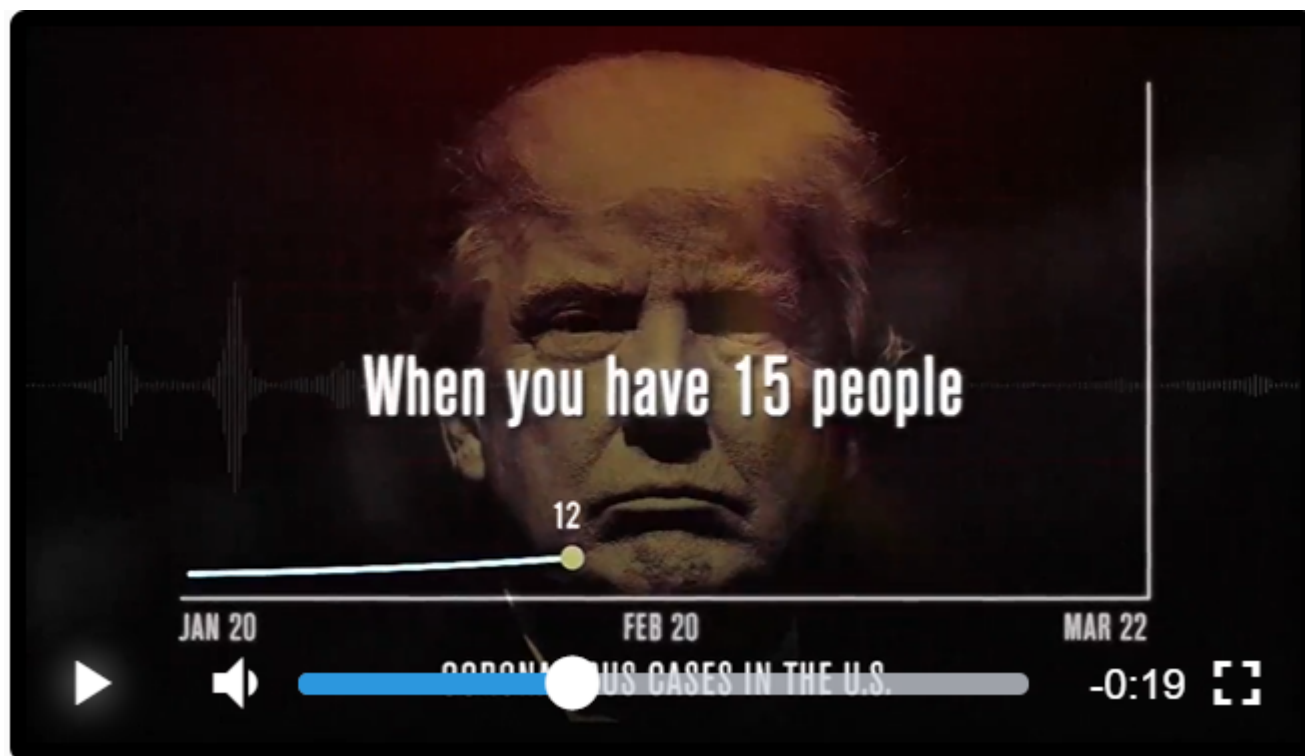
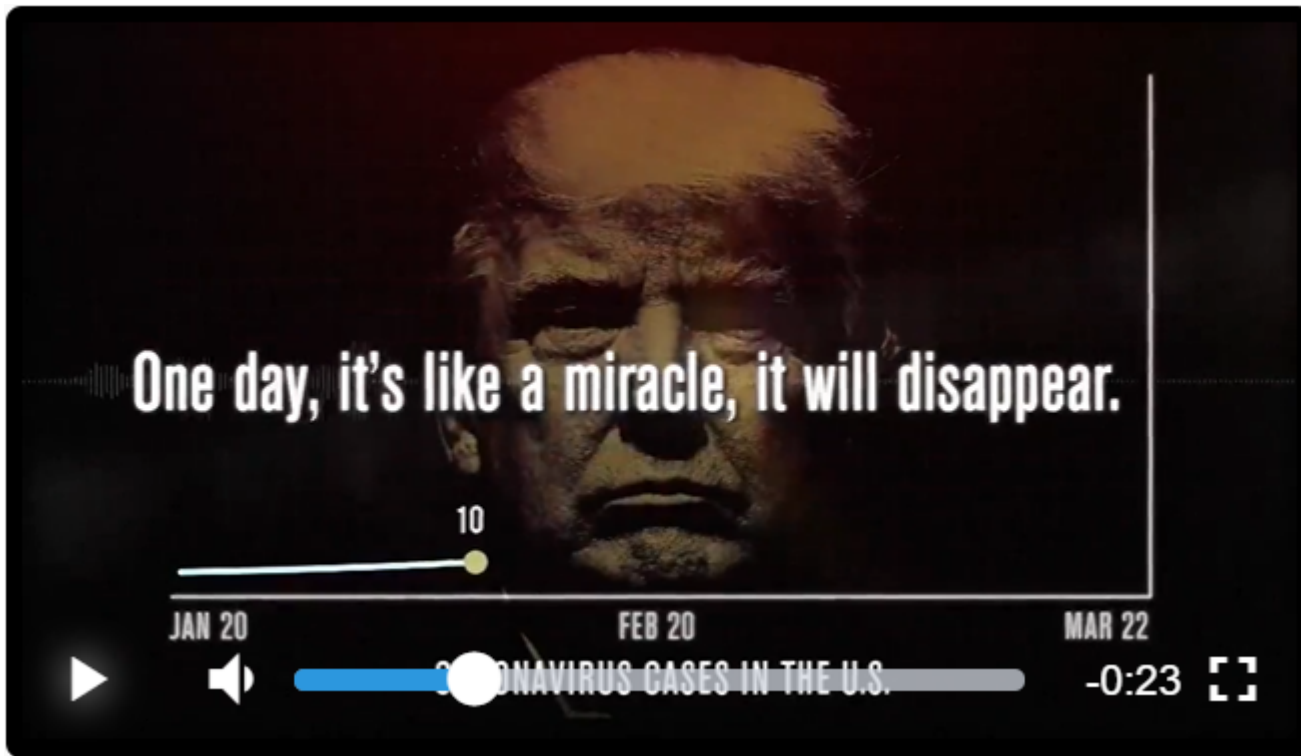
[Super PAC](#) Runs HOAX Ad Using Trumps Own Words As Graph Shows Virus Deaths Rising (March 24, 2020)



S







and within a couple of days

14

JAN 20 FEB 20 MAR 22

CORONAVIRUS CASES IN THE U.S.

-0:17

This screenshot shows a video player interface. The background features a portrait of Donald Trump. A line graph plots COVID-19 cases in the U.S. from January 20 to March 22. A yellow dot on the graph is labeled with the number '14'. The video player controls at the bottom include a play button, a volume icon, a progress bar, and a timestamp of -0:17.

is going to be down to close to zero.

22

JAN 20 FEB 20 MAR 22

CORONAVIRUS CASES IN THE U.S.

-0:16

This screenshot shows a video player interface, similar to the one above. The background features a portrait of Donald Trump. A line graph plots COVID-19 cases in the U.S. from January 20 to March 22. A yellow dot on the graph is labeled with the number '22'. The video player controls at the bottom include a play button, a volume icon, a progress bar, and a timestamp of -0:16.

We really think we've done a great job

121

JAN 20 FEB 20 MAR 22

CORONAVIRUS CASES IN THE U.S.

-0:14

▶ 🔊

in keeping it down to a minimum.

264

JAN 20 FEB 20 MAR 22

CORONAVIRUS CASES IN THE U.S.

-0:13

▶ 🔊



People are surprised

20579

JAN 20 FEB 20 MAR 22

CORONAVIRUS CASES IN THE U.S.

-0:09

that I understand it.

28430

JAN 20 FEB 20 MAR 22

CORONAVIRUS CASES IN THE U.S.

-0:08

